

Alaska Department of Fish and Game

Habitat Section
Southeast Region



191-20-13800-2016-3151

ADDITION

Water body name:

Survey date: 7/19/2024

Quad: Icy Bay D2, D3

Species & Lifestage: CO

Upper Reach Latitude: 59.976555 **Longitude:** -141.644722

Survey crew: NJ, CD, DK

Lower Reach Latitude: 59.972405 **Longitude:** -141.660037

Findings: We surveyed this cataloged stream using baited minnow traps and GPS and captured juvenile coho salmon, Dolly Varden, and stickleback. There are large amounts of slash in the stream; likely impacting fish passage. Stream stays channelized in the trees then becomes ponded water as it approaches the old logging road. This is a difficult area to map due to number of wet areas, many of which likely connect during high water (Table 1; Figures 1–3).

Recommendations: Extend upper extent of Stream No. 191-20-13800-2016-3151 up to waypoint 660 in the anadromous waters catalog (Figure 4).

Nomination: Pending

Table 1.–191-20-13800-2016-3151 survey data.

Waypoint	Latitude	Longitude	Notes	Stream Width ft	Stream Substrate	Habitat Features	Gradient %	Sample Effort	Sample Results
656	59.975778	-141.647380	Large amounts of slash in the stream. Likely blocks fish and disrupts flow. Channel picks up just downstream of slash.	2-4	Large Gravel Small Gravel		0-1	MT	5 CO 1 SB
657	59.975862	-141.646080	More slash in stream downstream of bridge.	2-4			0-1	MT	6 CO 4 DV
660	59.976558	-141.644744	Minnow trap set in ponded area. Water crosses closed out logging roads, may be connected to channel with CO downstream. Trap overnight, CO dead likely eaten by diving beetle so pics weren't available. Ponded area, channelizes and loops back down around to connect to the road where the bridge crosses. Streams layer seems to be off. Will need to be corrected.		Fine Organic		0-1	MT	2 CO
756	59.976423	-141.644582	Set in ponded area near logging road, no fish caught may be disconnected.					MT	No Fish



Figure 1.—Juvenile coho salmon caught at waypoint 657.



Figure 2.—Stream crossing the road at waypoint 660.



Figure 3.—Slash covering part of the stream at waypoint 656.

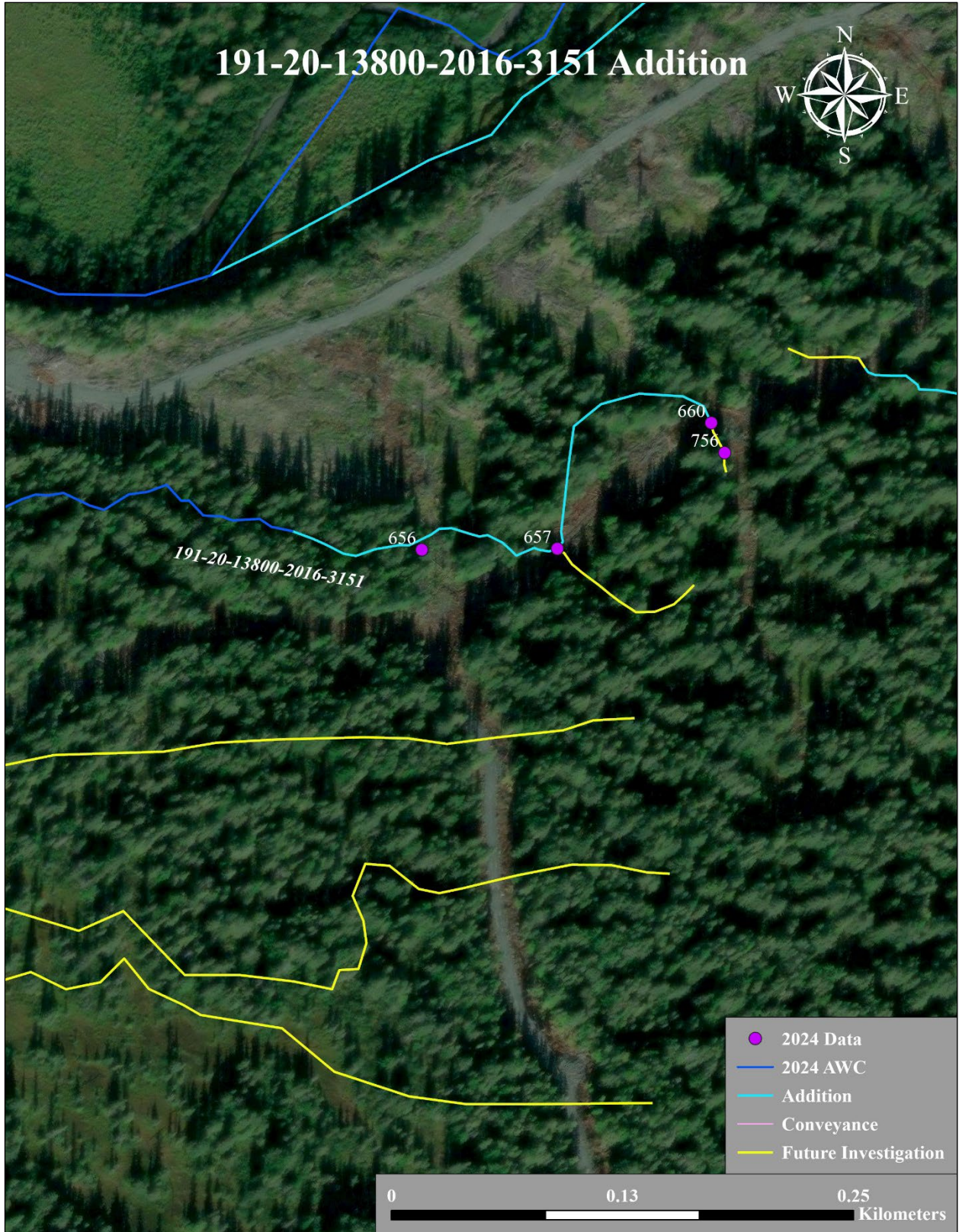


Figure 4.—Stream No. 191-20-13800-2016-3151 addition map.